

## WHERE WE'VE ENGAGED THE COMMUNITY

- Community Open Houses (February 2024)
- Interactive Mapping
- Focus Group “Listening Sessions”
- Online Survey

## WHAT WE HEARD:



### Favorite Things...



KAT Service



Parks & Green Spaces



Farmers Market / Library / Zoo / University



### Current Needs & Wants...



Reducing Congestion  
(Decreased commute times)



First-Last Mile Transit Connections  
(Safer options to final destinations)



Maintenance and Preservation of Infrastructure



Safe Options for Biking & Walking  
(crossing major roads, bike lanes, sidewalks)



## What this Region could look/feel like by 2050?



Safe Routes to School  
(Sidewalks, Separated Bike Lanes)



Regional Transit Connections  
(Reliable, safe connections)



More Bikeways & Trails



Reduced Vehicle Speeds & Safer Travel Options



Smart Growth in Urban Areas  
(Density Focused while preserving green space)



More Walkable and Bikeable Streets  
(Connections between neighborhoods)

# What **projects** (or types) would make life better for your **children / grandchildren**?

12 responses

***DRAFT results***

less distracted drivers  
protected bike paths transit range  
greenways efficiency  
diverse modes of transpo  
safer transit aircraft connectivity  
connected sidewalks  
buffered bike lane  
sidewalks everywhere



Funding

What are our **BEST** or **MOST USEFUL** return on investment for transportation dollars?

***DRAFT results***

9 responses

bridges  
congestion mitigation  
bollards no right on red  
regional connection  
local quality buses  
decrease turn radii  
corridor improvements



## WHAT TYPES OF PROJECTS ARE MOST NEEDED?

Place a dot (sticker) in the area to the right of the scale bar to vote.

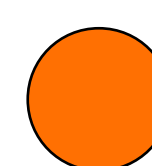
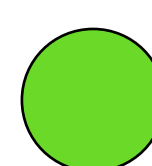


**DRAFT results**

### REGIONAL PROJECTS



### BENEFIT THE REGION

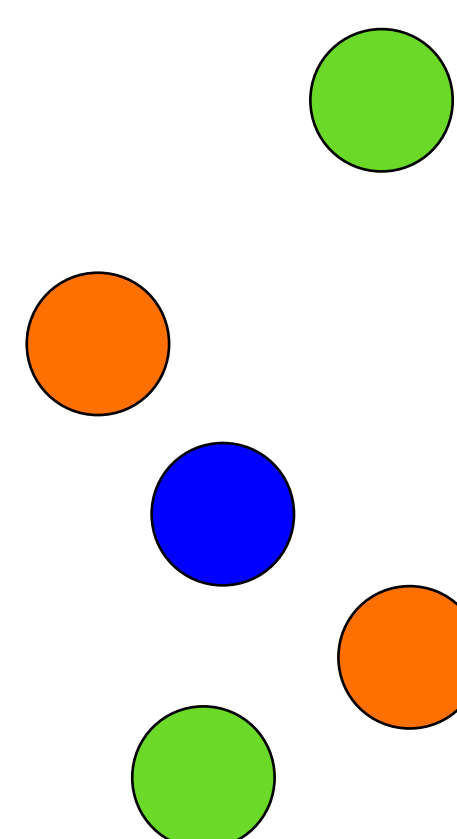


### BALANCE OF BOTH

### MANY SMALL, LOCAL PROJECTS



### BENEFIT YOUR COMMUNITY

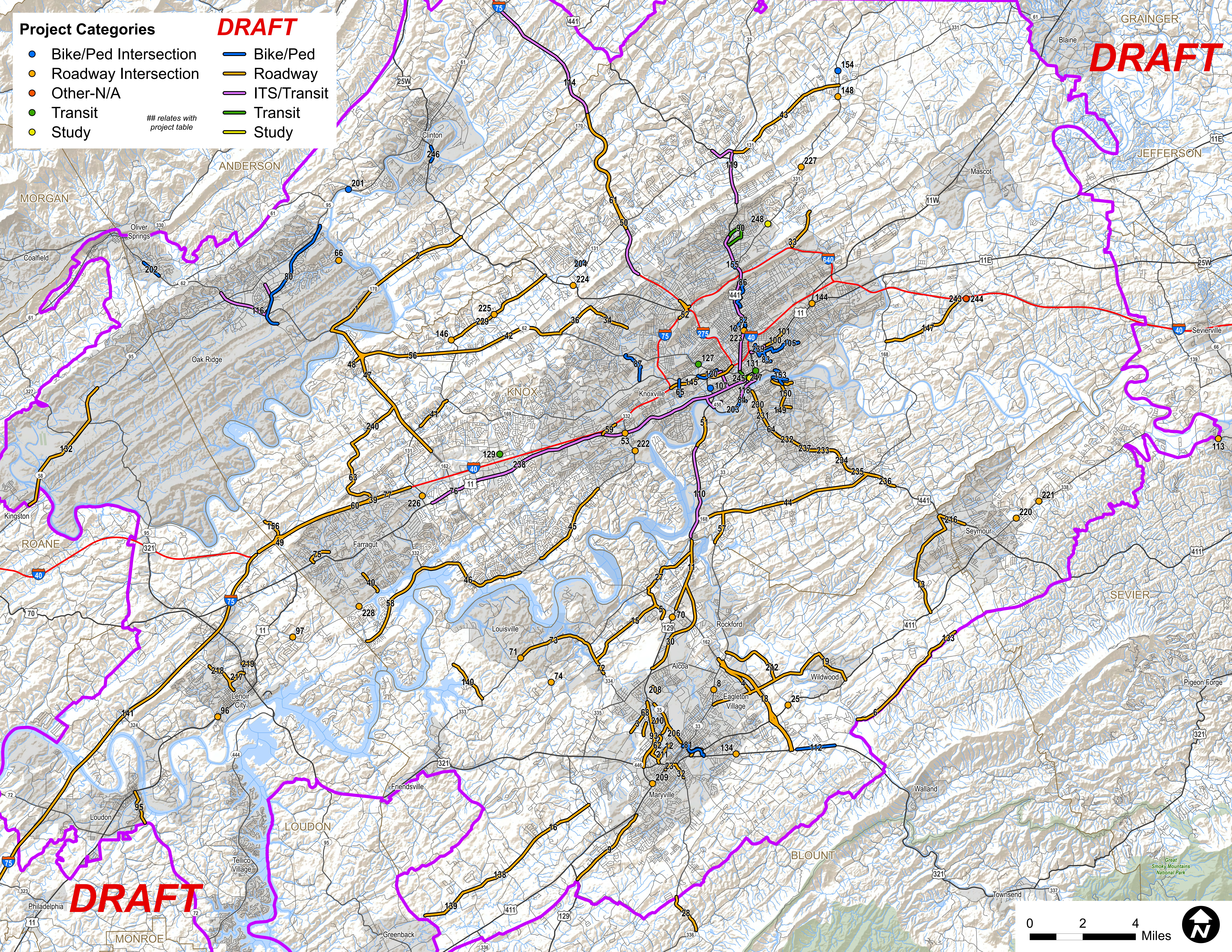




**Project Categories**

**DRAFT**

- Bike/Ped Intersection
  - Roadway Intersection
  - Other-N/A
  - Transit
  - Study
- ## relates with project table
- Bike/Ped
  - Roadway
  - ITS/Transit
  - Transit
  - Study



**DRAFT**

**DRAFT**



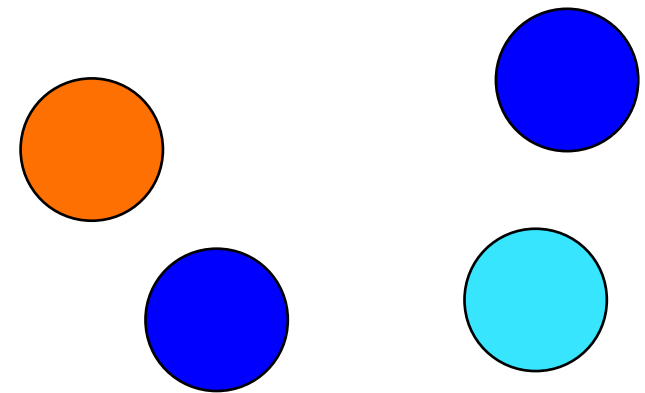


## WHAT ARE THE MOST PRESSING PROBLEMS TO FIX?

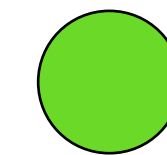
Place a dot (sticker) in the area under the images to vote.



**Daily commute to work**  
(CONGESTION)



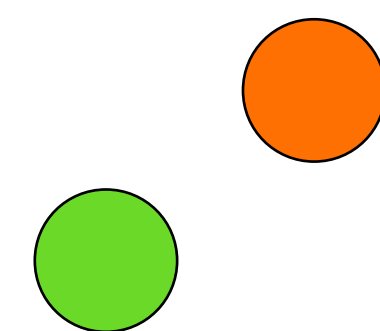
**Weekend or leisure activities**  
(GREENWAYS / TRAILS)



**Local sidewalk connectivity**  
(BETWEEN NEIGHBORHOODS)



**Maintain existing bridges/roads**  
(MAINTENANCE)



**New roadway connections**  
(NEW, CONSTRUCTION PROJECT)



**Improve ability to get around**  
*without a car* (MULTIMODAL)



## WHERE DO YOU WANT TO SEE INVESTMENT?

Place a dot (sticker) in the area under the images to vote.



**TRANSIT IMPROVEMENTS**

\$14

*DRAFT results*



**WALKING / BIKING IMPROVEMENTS**

\$13



**ROADWAY / BRIDGE  
MAINTENANCE & IMPROVEMENTS**

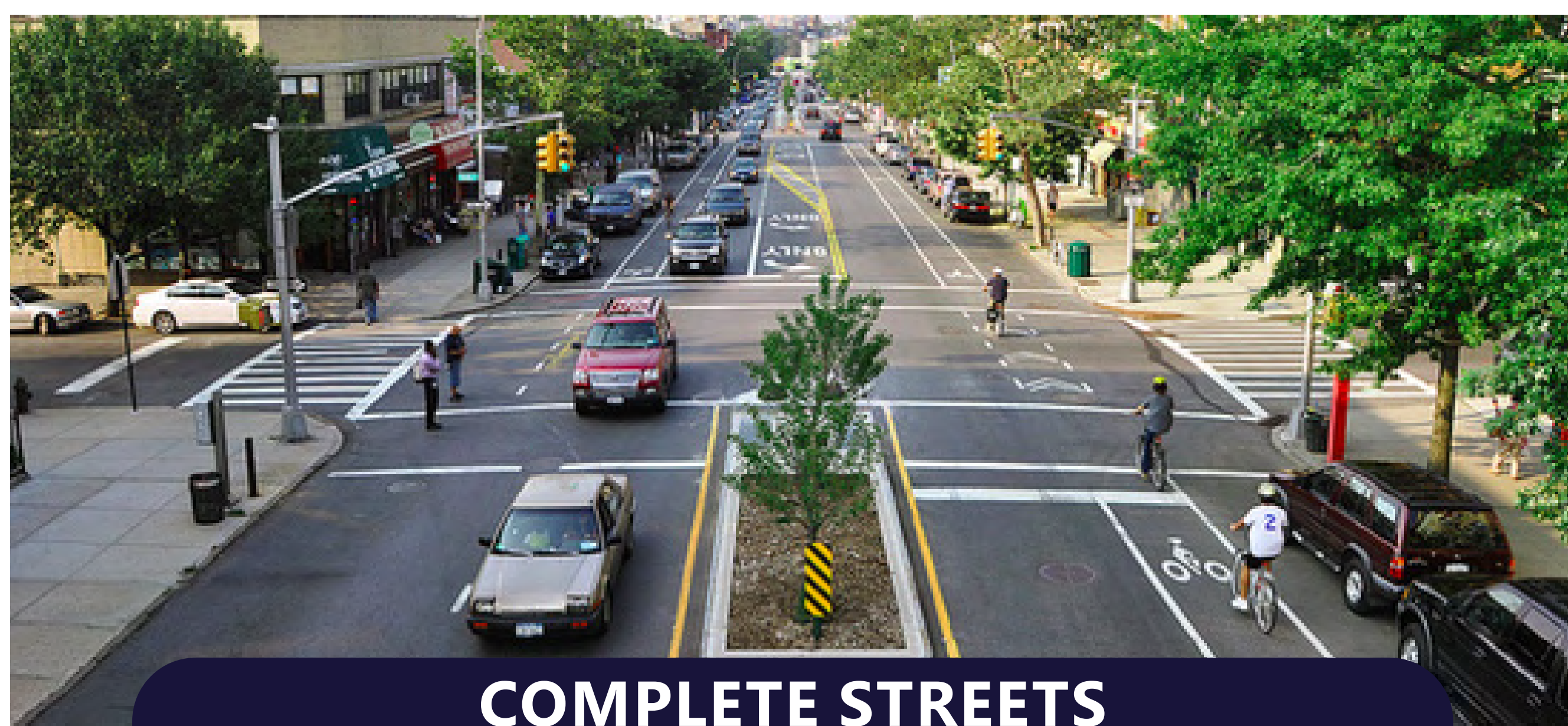
\$8

*DRAFT results*



**ITS / SMART TECHNOLOGY**

\$8



**COMPLETE STREETS  
CORRIDOR INVESTMENTS**

\$14

*DRAFT results*



**STUDY**

\$3