

MOBILITYPLAN



Knoxville TPO 2050 MTP Update

Community **Virtual** Open House – Lunch & Learn
Tuesday, February 13, 2024

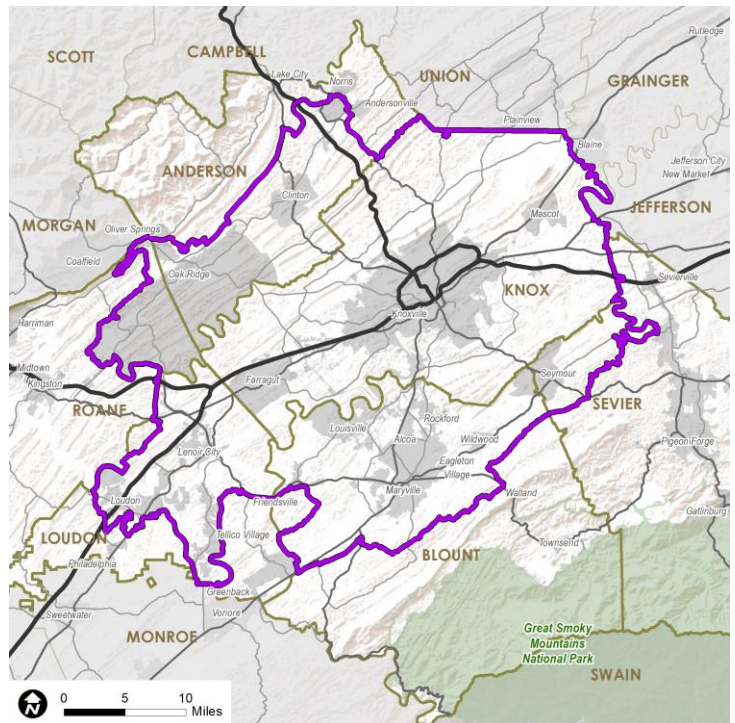
1

Who is this plan?



Knoxville TPO

- Amy Brooks**
Amy.brooks@knoxplanning.org
- Mike Conger**
mike.conger@knoxplanning.org
- Craig Luebke**
Craig.Luebke@knoxplanning.org
- Doug Burton**
Doug.burton@knoxplanning.org
- Ally Ketron**
Ally.Ketron@knoxplanning.org



2

Project Teammates



3

Today's Topics

1. *What is this Plan?*
2. *What do we (think we) know?*
3. *Tell us about...* [Polling]
4. *How to stay connected*

Visit www.Menti.com

- Use code **5607 5575**
- or take a photo of this QR code



Name your favorite PLACES in the Knoxville area

MOBILITYPLAN 2050

4

Metropolitan Transportation Plan is...

- **Federally-required:** all TPOs must do this every ~4 years!
- **Long-range:** 20+ years
- **Multimodal:** walking + biking + transit
- **Fiscally-constrained:** based on cost-effectiveness and needs
- Representation of **YOUR** local goals / needs

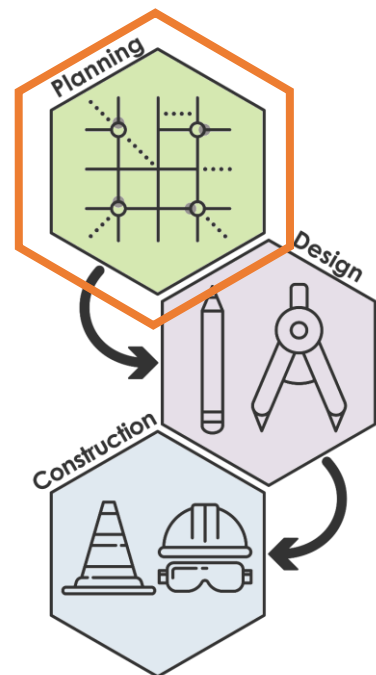


MOBILITYPLAN 2050

5

Why Long-range Planning?

- “30,000-foot viewpoint”
- First of many steps
- Vision for the future - Be bold!
- Prioritize needs
- **Step 1** in 3-step process →



MOBILITYPLAN 2050

6

Why are YOU here?

- Validate issues
- Identify problem areas or corridors
- Guide multimodal recommendations
- Suggest priorities

MOBILITYPLAN 2050

7

8

General Timeline



20+ month time frame

MOBILITYPLAN 2050

8

Outreach to date

- **3,280+** e-newsletter recipients
- **690+** survey participants
- **330+** point of interest added
- **84** focus group participants
- Three (3) Community Events this week:
 - Monday evening 4-7 pm
 - Tuesday afternoon *virtual* 12-1 pm
 - Tuesday evening 4-7 pm



MOBILITYPLAN 2050

9

Today's Topics

1. *What is this Plan?*
2. *What do we (think we) know?*
3. ***Tell us about...*** [Polling]
4. *How to stay connected*

MOBILITYPLAN 2050

11

Cultural Amenities



Music Scene (Bluegrass, Country)



University of Tennessee, Knoxville

- Education & employment



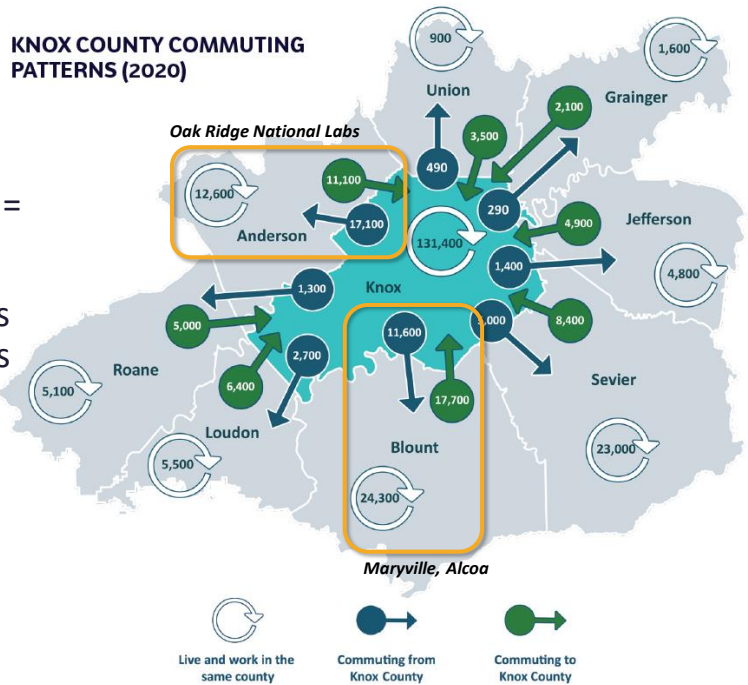
Great Smoky Mountains / Recreation



MOBILITYPLAN 2050

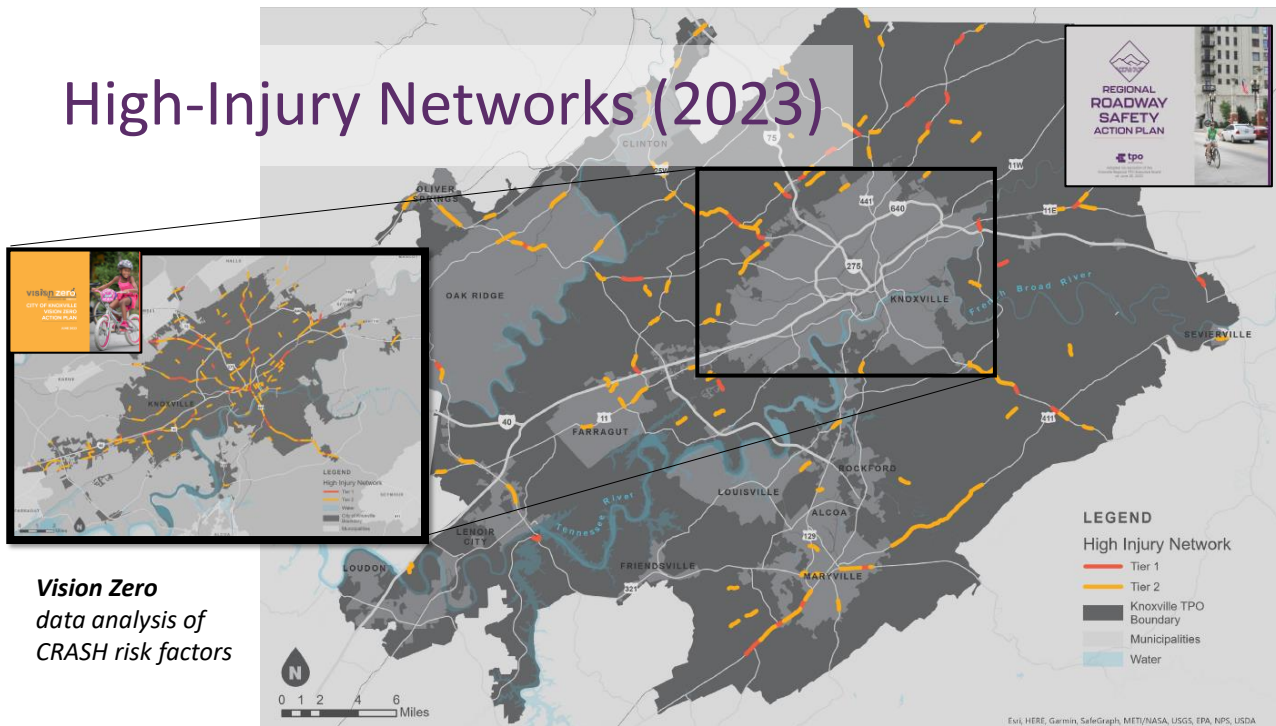
12

- Daytime population swell = **workday commuters**
- Anderson, Blount counties are also employment hubs



14

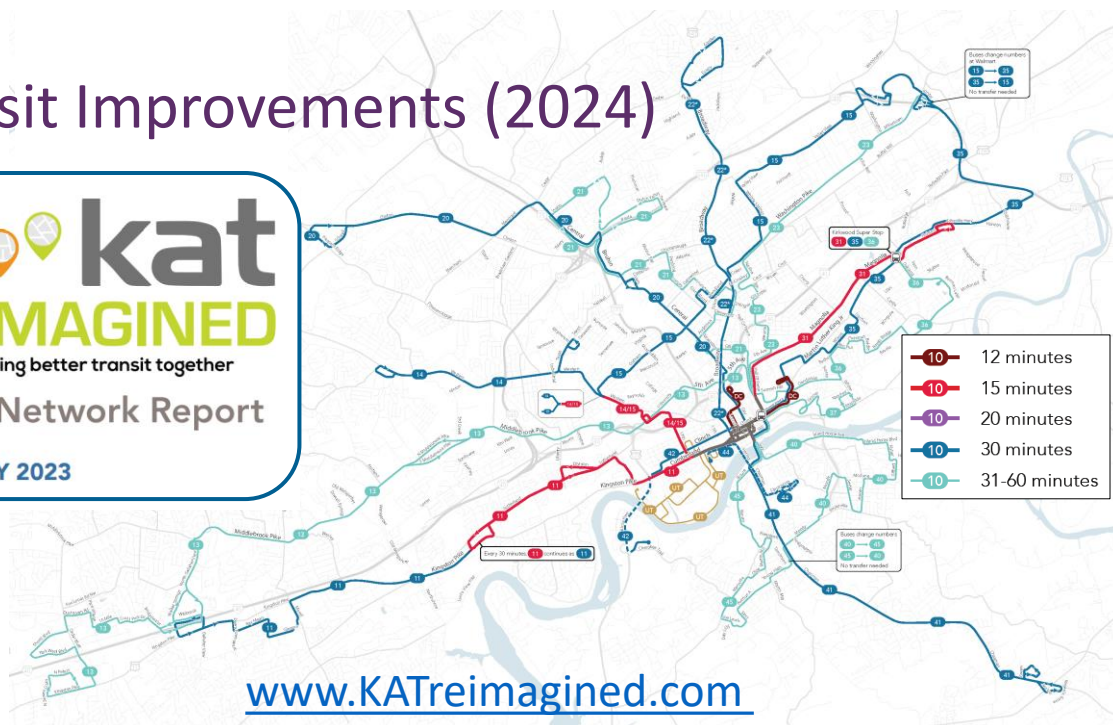
High-Injury Networks (2023)



Vision Zero data analysis of CRASH risk factors

Transit Improvements (2024)

kat
REIMAGINED
designing better transit together
Draft Network Report
JANUARY 2023



Today's Topics

1. *What is this Plan?*
2. *What do we (think we) know?*
3. **Tell us about...** [Polling]
4. *How to stay connected*

Visit www.Menti.com

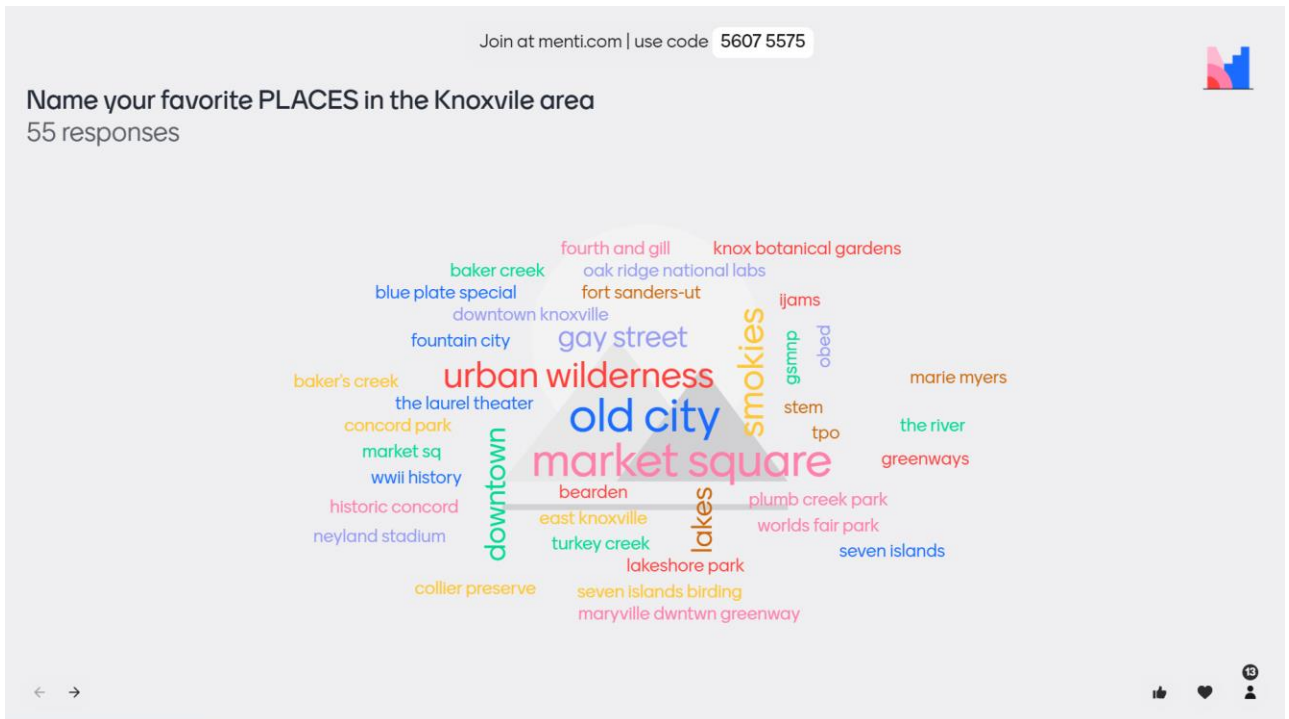
- Use code 5607 5575
- Or take a photo of this QR code



Name your favorite PLACES in the Knoxville area

MOBILITYPLAN 2050

18



19

Join at menti.com | use code 5607 5575



Q1: How do YOU move around this region? (check all that apply)



Walk or bike to work



Take Uber / Lyft in the past year



Used public transit in the past year



Drive alone to work (>75% days)



Carpool or vanpool



Work from home at least 1 day per week

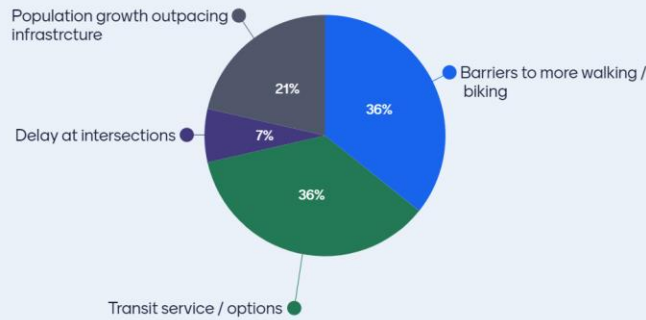


20

Join at menti.com | use code 5607 5575



Q2: What is YOUR biggest transportation ISSUE? (choose 1)

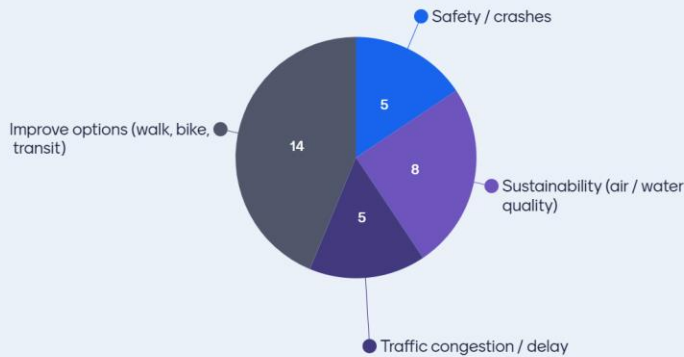


21

Join at menti.com | use code 5607 5575



Q3: What topics are MOST important to focus on? (choose 2)



22

Join at menti.com | use code 5607 5575



Q4: Which trend has the most IMPACT on this region's transportation future? (choose 1)

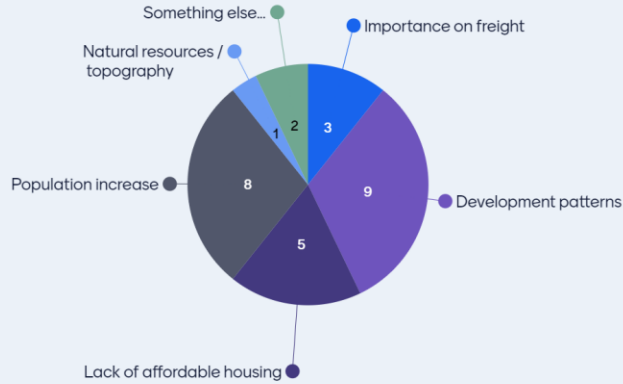


23

Join at menti.com | use code 5607 5575



Q5: What makes transportation MORE CHALLENGING? (choose 2)



← →



24

Today's Topics

1. *What is this Plan?*
2. *What do we (think we) know?*
3. ***Tell us about...*** [Polling]
4. ***How to stay connected***

MOBILITYPLAN 2050

26

How to Stay Connected

- www.KnoxMobility.org
- Feedback tab

THANK YOU!

MOBILITYPLAN 2050

PLAN MEETINGS FEEDBACK
MOBILITYPLAN 2050

Public Feedback

Your input is an essential element of this process. Help us out by visiting the links below, and please share them so your friends and neighbors can also contribute.

Survey

We want to hear from you about what you would like to see for the future of transportation within the Knoxville region. Take the survey and share the link with your friends and neighbors! The project survey is confidential and participation is voluntary. The answers you provide will be collected and aggregated. Survey results will be shared here, during public meetings, and in the resulting final plan.

[Survey](#)

Map

Visit the map to leave comments and suggestions for the Mobility Plan update. You will be able to make comments directly on the map by zooming into areas, streets, or specific intersections. This provides valuable feedback that is linked directly to locations in our study area. If you leave a comment early in the planning process, be sure to visit it again to see how the map grows over time!

[Interactive Map](#)

Mobility Plan 2050
For more information or general inquiries, please contact us.