

Knoxville Regional Transportation Planning Organization

Priority Populations

1:200,000

LEGEND

- ★ County Seat
- Knoxville TPO Boundary
- State Highways
- Interstate
- Freeway/Expressway
- Arterial
- Collector
- Priority Populations
- Very High
- High
- Moderate
- No Population

Methodology

Priority Populations

Certain demographic and social characteristics indicate areas with people who have lower levels of access and opportunity, and greater vulnerability to threats. Accounting for the needs of these communities is crucial in transportation planning, as the residents of these neighborhoods are more reliant on transit, walking and bicycling as modes of transportation as they seek to access jobs and education. Knoxville Regional TPO has identified these communities as Priority Populations. Using census data examined at the level of census tracts, communities were scored from low to high for their access to opportunities, accessibility constraints, and demographic vulnerabilities. These three scores were then combined to reach the overall Priority Populations rankings which are shown on the map below.

Outreach Initiatives

Input from the public is a crucial component to the MTP development as it provides an opportunity for residents to participate in the planning process and impact the programming of transportation dollars. The key goal of the public participation efforts is to engage a variety of individuals that represent different geographic locations, income levels, age brackets, education attainment levels, races and ethnicities, and physical abilities. To do this, outreach to traditionally underserved populations will be a focused effort through the TPO's Priority Population identification methodology.

The Knoxville Regional TPO is committed to providing direct outreach to underrepresented stakeholders through the MTP process. This is achieved by creating accessible meetings and information, as well as providing methods that maximize opportunities for involvement. In this effort, input for all groups will be captured at multiple points throughout the planning process using a variety of outreach methods, including online engagement through surveys, mapping applications, and video presentations.

Accessibility

In assessing the infrastructure and built environment of the communities, the following indicators were included in the accessibility analysis:

- Access to Physical Activity Centers
- Active-Transportation Commuters
- Public Transit Commuters
- Vehicle Availability
- Access to Healthy Food
- Children with Access to Healthy Food

Knox County has the highest concentration of Very High ratings for accessibility in the region. Most areas near urban centers have greater accessibility to transit and food, while the scoring drops visibly lower in the rural areas. A concentration of Very Low accessibility scores can be seen in the southeast section of the TPO.

Opportunity

Income and education are strong indicators for neighborhood opportunities. The following factors were included in the opportunity analysis:

- Population in Poverty
- Household Income
- Households with Public Assistance income
- Living-Wage jobs
- Unemployment Rate
- Housing Plus Transportation Costs
- Families w/ Children Eligible for Free/Reduced Price School Lunch
- Adults without High School Education
- College-Age Population Enrolled in College
- Preschool-Age Population Enrolled in Preschool

As with accessibility factors, a higher concentration of opportunities is found near urban areas.

Vulnerability

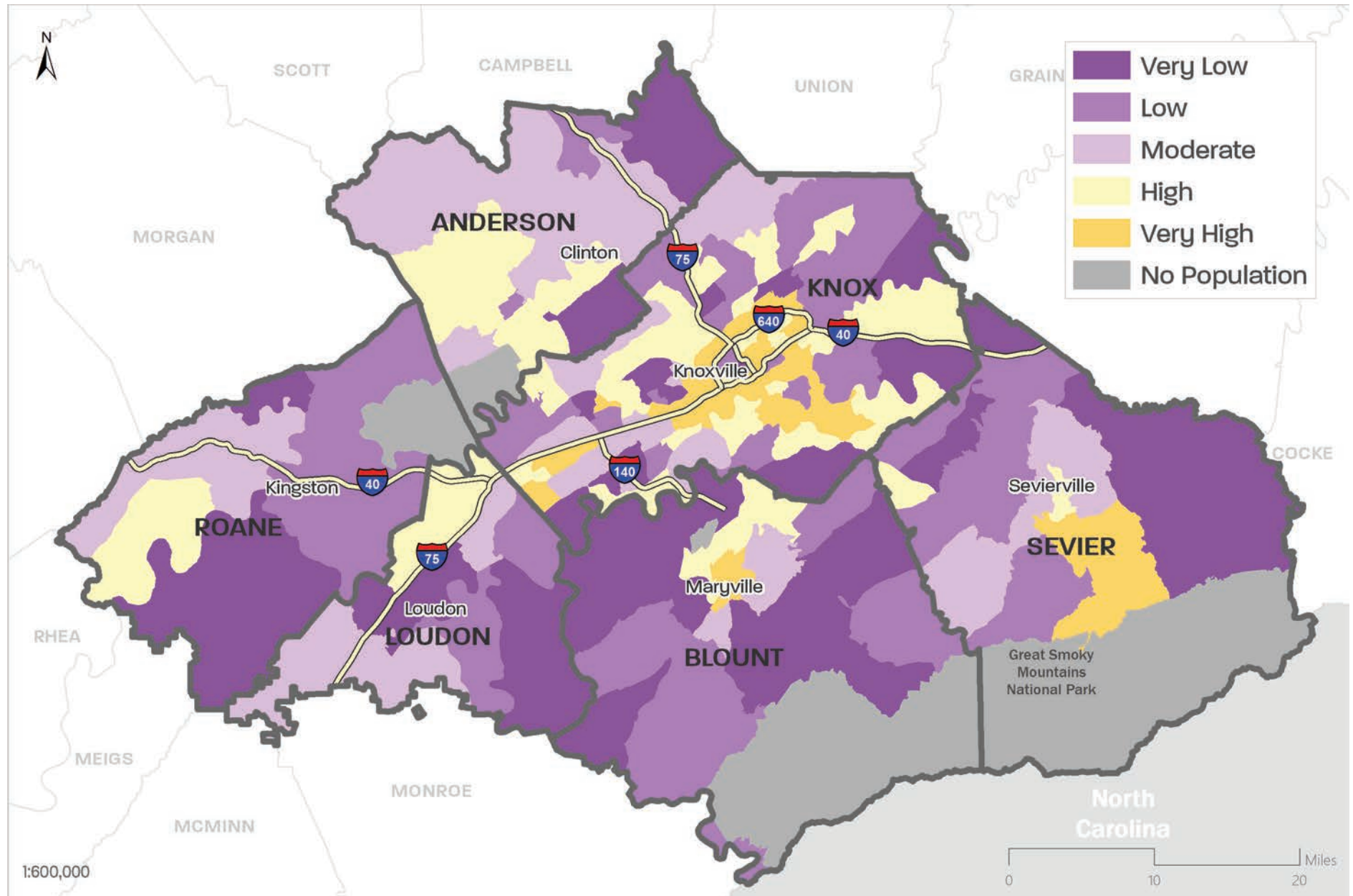
Measured in factors describing the physical conditions of communities, the following were included in the vulnerability analysis:

- Persons with Disabilities
- Minority Population
- Persons with Limited English Proficiency
- Children
- Seniors
- Single-Parent Households

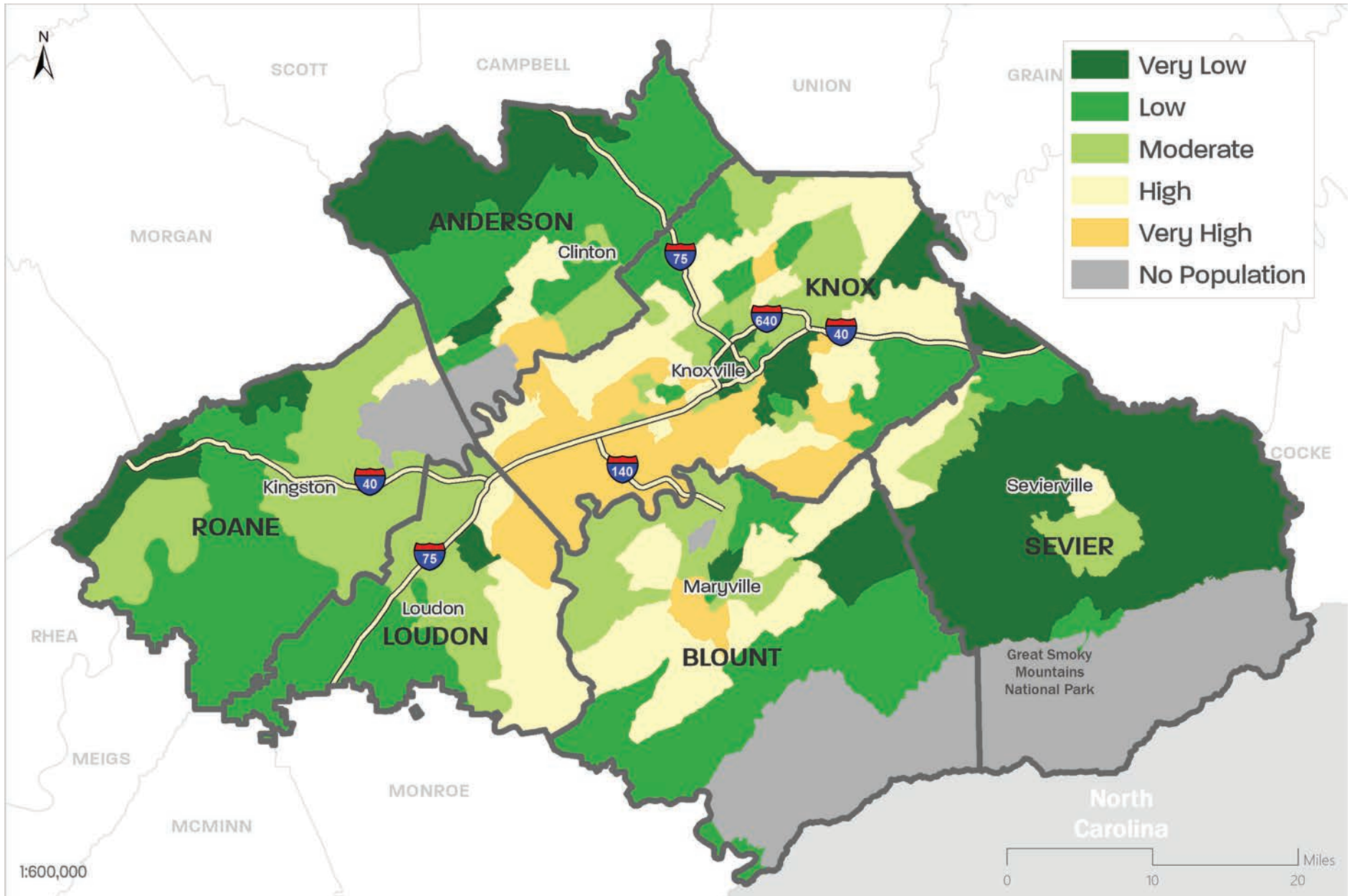
Demographic measures of high-risk communities are concentrated in the far east and west of the region. Rural areas tend to show a higher rate of vulnerability due to low population overall.

Priority
Population
Score

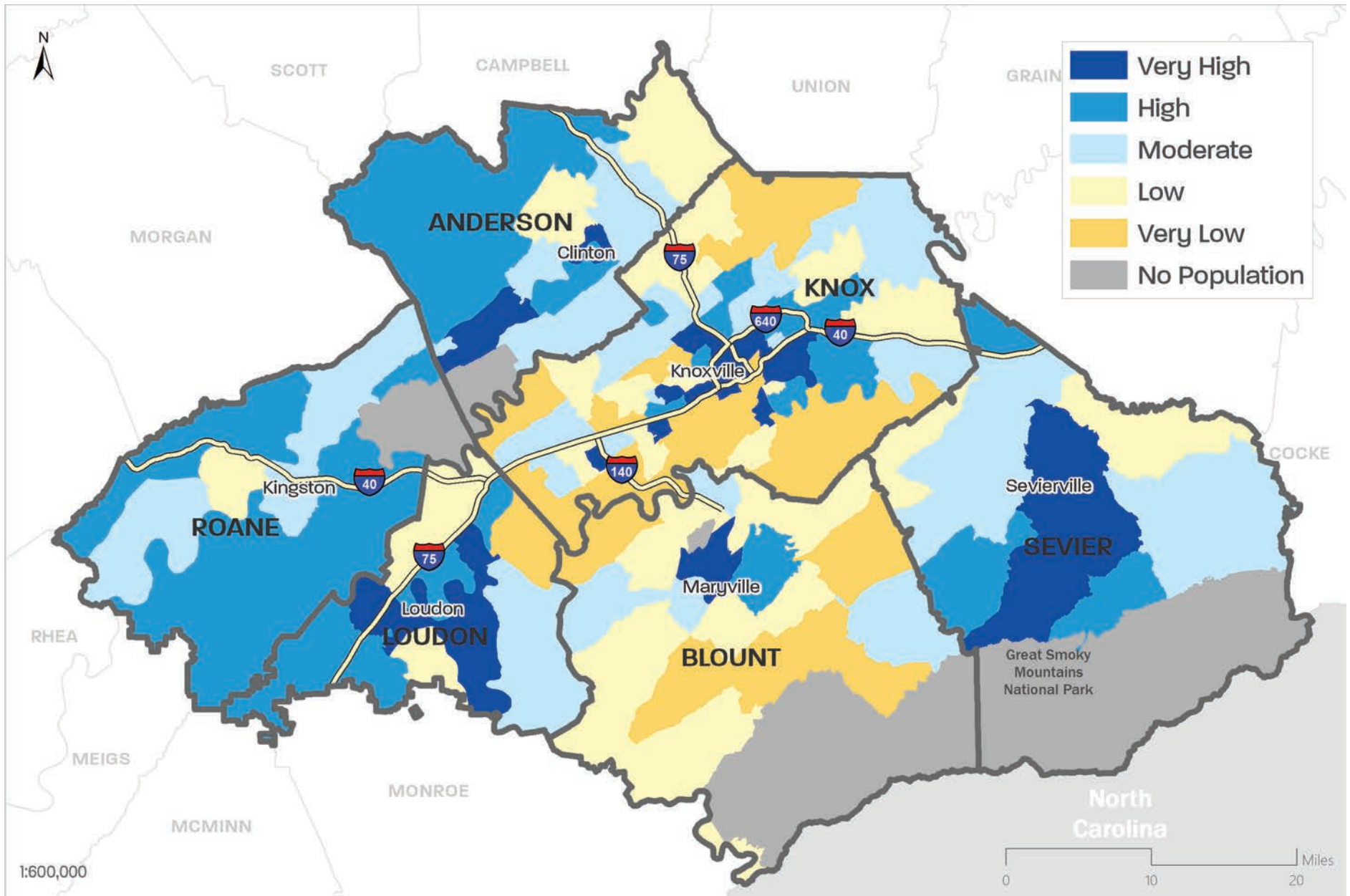
Priority Populations: Accessibility (2018)



Priority Populations: Opportunity (2018)



Priority Populations: Vulnerability (2018)



Data Sources:

Knoxville Regional TPO; 2019 TDOT ETRIMS; US Census Boundaries